

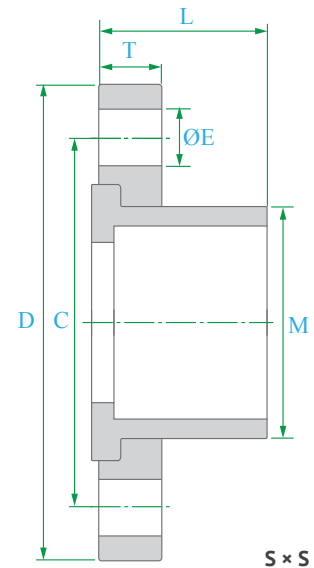
PVC SCHEDULE 80 FITTINGS

Weights, Dimensions and Tolerances

SECTION

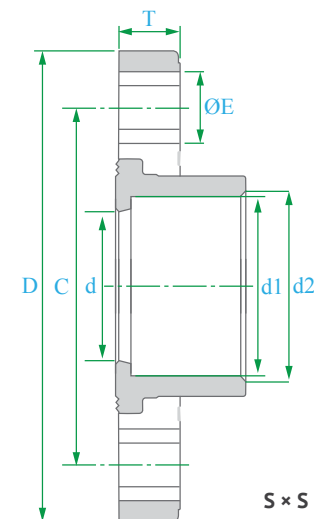
Van Stone Flanges

PART	NOMINAL SIZE	FLANGE S × S	UNIT OF MEASURE: MM					Φ E-N	APPROX. WT.
			D	C	M	T	L		
0407.FLV.0050	1/2"		89.00	60.30	31.00	12.70	25.40	14.20	0.10
0407.FLV.0075	3/4"		98.00	69.90	36.50	14.20	28.50	14.20	0.11
0407.FLV.0100	1"		108.00	79.40	44.50	16.60	31.30	13.00	0.18
0407.FLV.0125	1 1/4"		116.00	88.90	54.00	16.60	34.10	15.00	0.22
0407.FLV.0150	1 1/2"		125.00	98.40	60.30	17.50	35.00	21.10	0.29
0407.FLV.0200	2"		149.00	120.70	73.00	20.60	38.10	21.10	0.40
0407.FLV.0250	2 1/2"		176.00	139.50	90.50	22.20	49.20	21.10	0.57
0407.FLV.0300	3"		190.00	152.40	108.00	25.40	57.10	18.00	0.68
0407.FLV.0400	4"		230.00	190.50	133.30	25.40	62.00	18.20	1.07
0407.FLV.0500	5"		257.00	215.90	158.70	28.50	73.00	22.00	1.53
0407.FLV.0600	6"		285.00	241.50	192.00	34.90	82.50	22.00	1.90
0407.FLV.0800	8"		343.00	298.50	242.00	37.30	111.00	22.00	3.80
0407.FLV.1000	10"		410.00	362.00	298.50	42.80	142.00	23.80	5.00
0407.FLV.1200	12"		489.00	431.80	349.00	42.80	184.00	25.40	9.00
0407.FLV.1400	14"		535.00	477.80	394.50	50.80	193.00	27.00	14.00
0407.FLV.1600	16"		597.00	541.30	450.00	60.30	216.00	28.50	-
0407.FLV.1800	18"		635.00	577.90	508.00	60.30	228.00	31.80	-
0407.FLV.2000	20"		698.00	635.00	561.20	63.50	264.00	31.80	-
0407.FLV.2400	24"		813.00	749.30	671.50	72.20	290.00	35.00	-



WTF™ Series Flanges

PART	NOMINAL SIZE	FLANGE S × S	UNIT OF MEASURE: MM						Φ E-N	APPROX. WT.
			D	d	d1	d2	C	T		
0407.FLV.0050	1/2"		95.00	15.0	21.54	21.23	64.70	12.50	20.2-4	0.09
0407.FLV.0075	3/4"		100.00	20.0	26.87	26.57	73.80	13.50	18.0-4	0.11
0407.FLV.0100	1"		118.00	25.0	33.65	33.27	85.20	15.50	21.8-4	0.17
0407.FLV.0125	1 1/4"		128.00	32.0	42.42	42.04	95.00	17.50	22.0-4	0.22
0407.FLV.0150	1 1/2"		140.00	40.0	48.56	48.11	105.00	18.50	22.0-4	0.29
0407.FLV.0200	2"		158.00	50.0	60.63	60.17	120.00	20.50	24.0-4	0.40
0407.FLV.0250	2 1/2"		180.00	65.0	73.38	72.85	142.00	23.50	21.0-4	0.58
0407.FLV.0300	3"		192.00	75.0	89.31	88.70	156.00	25.00	23.5-8	0.70
0407.FLV.0400	4"		230.00	100.0	114.76	114.10	185.50	27.00	24.5-8	1.08
0407.FLV.0600	6"		280.00	150.0	168.83	168.00	240.00	31.00	24.0-8	1.90
0407.FLV.0800	8"		342.00	204.0	219.84	218.70	293.00	36.00	27.0-8 / 23.0-12	3.30
0407.FLV.1000	10"		405.00	252.0	273.81	272.67	357.50	40.00	29.5-12	5.20
0407.FLV.1200	12"		-	-	-	-	-	-	-	-



Notes: Physical dimensions and tolerances meet the requirements of ASTM Standard D-2467. PVC material meets ASTM Standard D-1784. Dimensions are subject to change without notice. Contact your HYDROSEAL representative for certification.