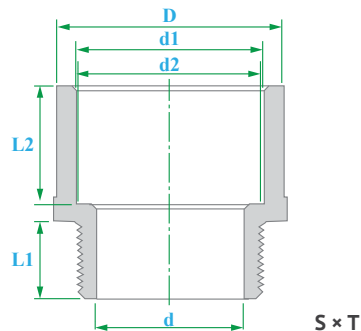


# PVC SCHEDULE 80 FITTINGS

## Weights, Dimensions and Tolerances

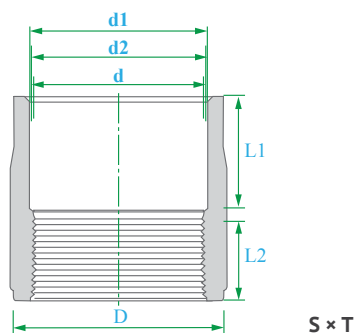
SECTION

### Male Adaptors



PART	NOMINAL SIZE	ADAPTOR - S × T	UNIT OF MEASURE: MM						APPROX. WT.
			D	d	d1	d2	L1	L2	
0307.MAP.0050	1/2"	29.50	15.00	21.54	21.23	22.50	18.00	0.02	
0307.MAP.0075	3/4"	35.00	20.00	26.87	26.57	25.50	18.00	0.03	
0307.MAP.0100	1"	43.00	25.00	33.65	33.27	29.00	20.00	0.04	
0307.MAP.0125	1 1/4"	52.50	32.00	42.42	42.04	32.00	22.00	0.07	
0307.MAP.0150	1 1/2"	59.00	38.00	48.56	48.11	35.00	22.00	0.09	
0307.MAP.0200	2"	72.00	48.00	60.63	60.17	38.50	25.00	0.12	
0307.MAP.0250	2 1/2"	87.50	60.00	73.38	72.85	44.50	32.00	0.24	
0307.MAP.0300	3"	105.00	75.00	89.31	88.70	48.00	33.00	0.32	
0307.MAP.0400	4"	132.00	100.00	114.76	114.07	57.50	36.00	0.55	

### Female Adaptors



PART	NOMINAL SIZE	ADAPTOR - S × T	UNIT OF MEASURE: MM						APPROX. WT.
			D	d	d1	d2	L1	L2	
0307.FAP.0050	1/2"	29.50	18.00	21.54	21.23	22.50	20.00	0.02	
0307.FAP.0075	3/4"	35.00	22.50	26.87	26.57	25.50	20.00	0.04	
0307.FAP.0100	1"	43.00	28.00	33.65	33.27	29.00	22.50	0.06	
0307.FAP.0125	1 1/4"	52.50	36.00	42.42	42.04	32.00	23.00	0.10	
0307.FAP.0150	1 1/2"	59.00	43.00	48.56	48.11	35.00	25.00	0.14	
0307.FAP.0200	2"	72.00	55.00	60.63	60.17	38.50	27.00	0.22	
0307.FAP.0250	2 1/2"	87.50	64.00	73.38	72.85	44.50	35.00	0.34	
0307.FAP.0300	3"	105.00	80.00	89.31	88.70	48.00	38.00	0.52	
0307.FAP.0400	4"	132.00	106.00	114.76	114.07	57.50	38.00	0.75	

**Notes:** Physical dimensions and tolerances meet the requirements of ASTM Standard D-2467. PVC material meets ASTM Standard D-1784. Dimensions are subject to change without notice. Contact your HYDROSEAL representative for certification.